

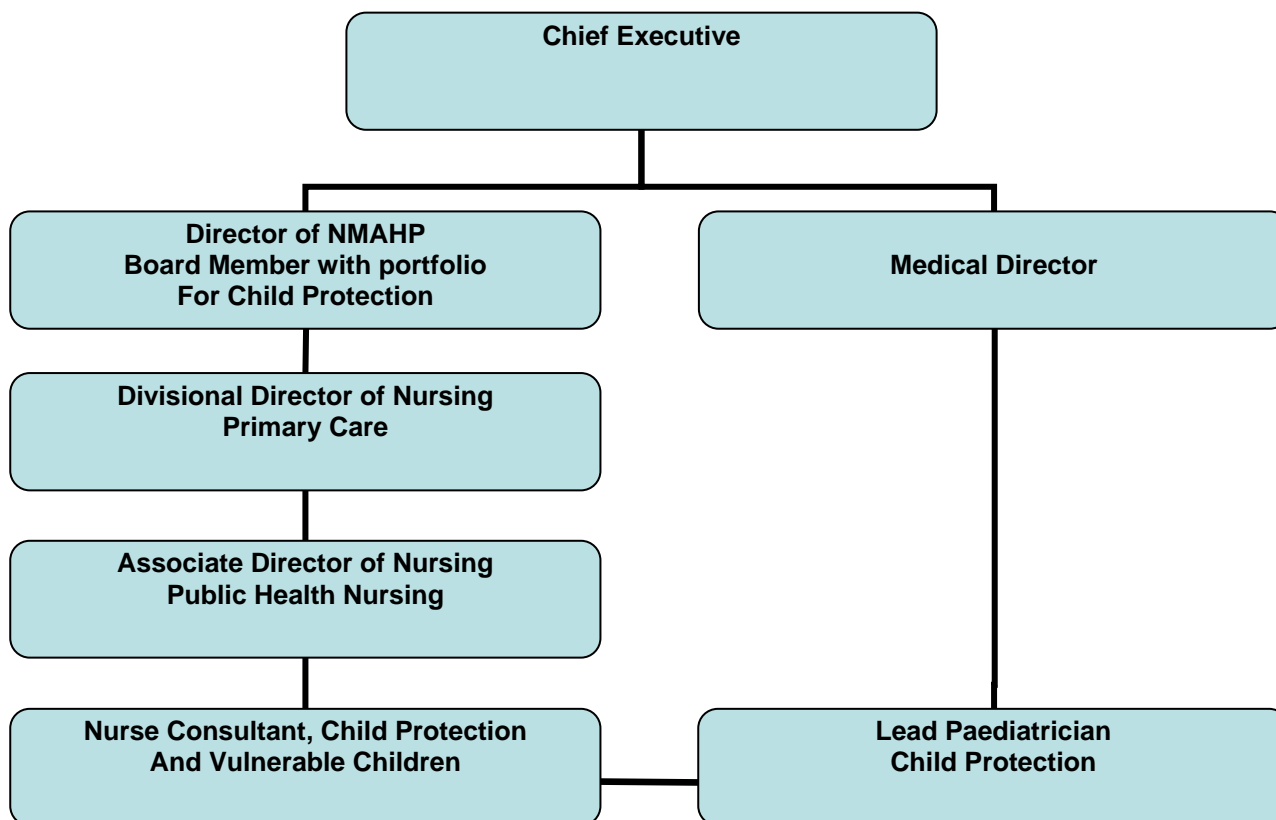


Child Protection Annual Report

From 1st April 2009 to 31st March 2010

Introduction

Within NHS Lanarkshire the following diagram illustrates the accountability framework for Child Protection within the organisation.



From April 2009 to March 2010 was another very busy year for the NHS Lanarkshire Child Protection team. During this time we welcomed Dr Mustafa Mulla to the team.

The NHS Lanarkshire Child Protection team members are:

Juliet Norman	Nurse Consultant Child Protection & Vulnerable Children
Shirley Clark	Child Protection Advisor
Marina McLaughlin	Child Protection Advisor
Lillias Renwick	Child Protection Advisor
Maureen Scott	Child Protection Advisor

Dr Linda Hunter	Lead Paediatrician Child Protection
Dr Lila Agrawal	Consultant Paediatrician
Dr Kamala Ray	Associate Specialist Community Paediatrician
Dr Mustafa Mulla	Associate Specialist Community Paediatrician

Admin members of the team:

Fiona Milton	Secretary to the Nurse Consultant for Child Protection & Vulnerable Children
John Boylen	Audit/Secretarial Support

In addition, we have three Child Protection Link Nurses, one at each of the three large acute hospital sites:

Gaynor McCluskey	Hairmyres Hospital
Elsie Donnelly	Monklands Hospital
Maggie Scoular	Wishaw General Hospital

Each of the Child Protection Link Nurses are Charge Nurses within the Emergency Department/See and Treat. They have one day per week dedicated to child protection work, not just within the emergency department but within their hospital. The role of the Link Nurse is that of a 'human signpost' to support staff in identifying where and from whom to access relevant information. In addition, the Link Nurses across the three hospitals provide child protection awareness training for acute health professionals. Should you wish an update session for your department please contact the Link Nurse for your hospital.

NHS Lanarkshire membership of North and South Lanarkshire Child Protection Committees (CPCs) is as follows:

North Lanarkshire Child Protection Committee

Dr Linda Hunter	Lead Paediatrician Child Protection (Vice Chair)
Juliet Norman	Nurse Consultant, Child Protection & Vulnerable Children
Geraldine Queen	Associate Director of Nursing

South Lanarkshire Child Protection Committee

Juliet Norman	Nurse Consultant Child Protection & Vulnerable Children (Vice Chair)
Dr Linda Hunter	Lead Paediatrician Child Protection
Geraldine Queen	Associate Director of Nursing

Our membership within the combined sub-groups for both North and South Lanarkshire Child Protection Committees is as follows:

Quality Assurance & Good Practice Sub-Group:

Juliet Norman	Vice-Chair (Nurse Consultant, Child Protection & Vulnerable Children)
Geraldine Queen	Associate Director of Nursing

Training & Staff Development Sub-Group:

Shirley Clark	Child Protection Advisor
---------------	--------------------------

Policies & Procedures Sub-Group:

Dr Linda Hunter	Lead Paediatrician Child Protection (Chair)
-----------------	---

Public Information & Communication Sub-Group:

Calvin Brown	Divisional Communications Manager - CHPs, Public Health, Web
--------------	--

Co-located Unit of North and South Lanarkshire CPCs and Multi-Agency Public Protection Arrangements (MAPPA)

The nursing and admin members of the NHSL CP team are all based at Regent House in High Patrick Street. Co-location has afforded us the opportunity to work even more closely

with the CP Co-ordinator for North CPC, Lead Officer for South CPC, Social Work, Education and the Police Family Protection Unit colleagues from North and South Lanarkshire, MAPPA and all admin support teams. Some of the benefits of co-location have been, easier access to sharing information, seeking other professional's views/perspectives on cases and less duplication of work. Adult Protection colleagues along with Service Co-ordinators (Domestic Abuse) are also co-located.

Child Protection Medical Team

Maintaining the Medical Child Protection service has continued to be a challenge this year. The service was maintained by two doctors at the start of the year, with continuing weekend locum cover on a rotational basis (due to a period of sick leave).

We were delighted to welcome Dr Mulla back to the Community Paediatric and Child Protection team in Aug 2009. This enabled us to maintain our best complement of Child Protection Doctors (4) for some years.

Our work continues to be challenging and stressful due to the nature of the job and work related to it e.g. medico-legal report writing and court appearances with a shortage of, or lack of, concrete evidence.

A total of 100 children were seen by our team this year for Joint Paediatric Forensic, Joint Paediatric, or Single Doctor Comprehensive Medical Examinations.

The Child Sexual Abuse (CSA) service for young people in Lanarkshire age 13-16yrs has been maintained and this is welcomed by our local colleagues in Police and Social Work.

A high level of expertise in Child Sexual Abuse examinations continues to be maintained. The medical team regularly attend regional peer review meetings at Yorkhill and on occasion present cases for teaching purposes.

The following guidelines have been developed:

- A Forensic Decontamination Protocol to be used at ward 19 Wishaw General Hospital in cases where Forensic Evidence is required;
- Guidance on the taking of samples where police are not involved developed in consultation with colleagues in Genito-Urinary Medicine and Microbiology;
- Guidance where a child requires Radiological Investigations has been updated.

We continue to provide support for Dumfries and Galloway Police Force in conducting Joint Paediatric Forensic Medicals Examinations where there are allegations of Child Sexual Abuse, three children/young people have been seen to date.

West of Scotland Managed Clinical Network

Lanarkshire continues to be actively involved in the network and contributions include:

Dr Hunter has developed Guidance on the Management of Children referred with Anogenital Warts, and this was presented at the Yorkhill Child Protection Unit Conference, Medical Aspects of Child Sexual Abuse, on 17th Nov

Dr Ray presented at the RCPCH Child Protection Study day

We have introduced, "The Medical Examination" explanation leaflet, produced by the MCN in collaboration with young people. This now replaces our own Lanarkshire leaflet.

A new Digital Colposcope for Child Sexual Abuse examinations was purchased.

Child Protection Training and Staff Development

Dr Hunter recorded a Child Protection training DVD for doctors which is used across the three hospital Emergency Departments.

The medical team continue to be involved in delivering:

- NHS Lanarkshire's Level 2 Child Protection training programme;
- University of the West of Scotland Post Graduate Child Protection Certificate;
- North and South Lanarkshire Social Work Child Protection Training;
- Royal College of Paediatrics Recognition and Response to Child Protection Training.

Training delivered by the NHSL CP Team includes the following:

- Corporate Induction;
- Child Protection Awareness for Clinical Staff (One day);
- Clinical Support Workers;
- Administration staff;
- Community mothers;
- Training for pre-registered students of nursing and midwifery at University of the West of Scotland.

Briefing/Development Sessions:

- eCare Child Protection Messaging;
- Child Protection for Midwives;
- Induction for newly qualified/returning to practice PHNs and PHNs joining NHSL from other health authorities;
- Child Protection Documentation;
- Significant Case Review briefings;
- Brandon Muir case briefings.

The Child Protection team in collaboration with the Reachout Service have developed briefings for Adult Mental Health colleagues.

The Nurse Consultant for Child Protection & Vulnerable Children provides the input to the Post Graduate Certificate in Child Protection, both by delivering two of the sessions and by acting as a mentor for some of the students.

The programme of training available within NHS Lanarkshire is available on FirstPort.

Child Protection Messaging

Child Protection Messaging Alerts are a prompt to practitioners to share information and are embedded in and support the Child Protection Procedures. The roll out of child protection messaging across Lanarkshire to the initial partners took place in 2006 and an ongoing rolling programme continues across NHS Lanarkshire Acute Services:

Phase 1 – Delivery to A&E, Children’s Wards, Dermatology, Outpatients, ENT, Day Surgery, Maternity, Neonatal, Mental Health and Orthoptics

Phase 2 – Delivery to priority NHS Lanarkshire Acute Services, AHP’s and Out of Hours is currently underway to broaden the reach into Acute services

Delivery to GP pilot sites – an evaluation will be carried out in the 2 practices that are live in order to inform roll out

Training and Development for NHS Lanarkshire Child Protection Team

- | | |
|--|---|
| • Child Protection Supervision Skills | Juliet Norman & Child Protection Advisors |
| • Post Graduate Certificate | Lillias Renwick |
| • BASPCAN Congress | Juliet Norman |
| • Master of Arts Child Welfare & Applied Studies | Juliet Norman |
| • Commenced course leading to Master of Science in Applied Studies in Child Welfare and Protection | Shirley Clark |

Child Protection Case Supervision

Child Protection Case Supervision for Public Health Nurses is delivered by the Child Protection Advisors and the Child Protection Supervision Policy identifies that CP Supervision should be delivered on a six-monthly basis. However, this is influenced by the needs of the Practitioner and the capacity of the Child Protection Advisors. The capacity of the Child Protection Advisors is influenced by the number of court attendances required and the number of ongoing Child Protection Reviews.

The Child Protection Supervision Audit report was published in 2009 and illustrated a high level of satisfaction. This report is available on FirstPort.

Partnership Working

Shirley Clark is a member of the North and South Lanarkshire Child Protection Committee Training & Staff Development Sub-Group.

Marina McLaughlin is involved with the planning and delivery of the eCare Child Protection Messaging training.

Lillias Renwick is a member of the Violence Against Women Co-ordinating Group and NHS Lanarkshire Adult Support and Protection.

Maureen Scott represents the Child Protection Team at meetings with the ‘Getting It Right For Every Child’ Development Team.

All of the Team are involved in a range of multidisciplinary and interagency fora in relation to Child Protection issues.

HMIe

Following the HMIe publication of 'How Well Do We Protect Children and Meet Their Needs', NHS Lanarkshire with their partner agencies have been involved in Self Evaluation and Quality Improvement against the new quality indicators. We recognise that Self Evaluation needs to be a continual process. The next inspections are due for Lanarkshire in 2010. In addition we are also awaiting the new national Guidelines which will be available for consultation summer 2010.

The Year Ahead

The team will be fully involved in the HMIe Self Evaluation, Quality Improvement and preparation for the next HMIe Child Protection inspections.

The CP Team will continue to evaluate the CP supervision delivered to PHNs and will ensure the best use of the Child Protection Advisor resource in this area of work.

We are awaiting the revised west of Scotland multi-agency procedures for child protection and it is anticipated that these will be available in Summer 2010.

The Central Point of Contact service is increasingly used by colleagues within Social Work and Family Protection Units however we need to continue to build on this. Consideration is also being given to the NHSL CP Central Point of Contact also being used by Social Work to notify NHSL of Looked After Children requiring a health assessment.

The NHSL CP team will continue to promote the wellbeing indicators and single agency assessment based on the GIRFEC practice model.

CP Team Communication

The methods of communication used by the CP team to disseminate and highlight relevant information to staff include:

- Firstport
- Staff briefing
- Pulse
- Inter-agency Child Protection newsletter

Audits

The audits completed from 1st April 2009 to 31st March 2010 are:

- NHSL Supervision Evaluation
- Case Supervision Audit
- Training & Evaluations

**Summary Report of Child Protection Activity for NHS Lanarkshire for the period
1st April 2009 to 31st March 2010**

The statistics outlined below in relation to attendance at Case conferences/Case Discussions highlight in the main Public Health Nurse involvement with children in the child protection system. These figures are not exhaustive consideration is currently being given as to how all Child Protection Activity can be reflected.

Health Professionals Referrals to Social Work for Serious Child Care/Child Protection Concerns (figures not representative of all health professionals, referrals mainly from PHNs with a small number from other disciplines):

1 April 2009 – 31 March 2010

Locality	Number of Referrals
Airdrie	36
Bellshill	37
Cambuslang/Rutherglen	8
Clydesdale	35
Coatbridge	52
East Kilbride	15
Hamilton	38
Motherwell	30
North Locality	22
Wishaw	48
Total	321

Health Professional Referrals from Acute Division

1 April 2009 – 31 March 2010

Site	Number of Referrals
Hairmyres	26
Monklands	124
Wishaw General	71
Total	221

Health Professional Referrals under Working with Children and Families affected by Substance Misuse Protocol - "Information To" Forms

(Since the introduction of the 'Information To' form, the CP Team are no longer routinely receiving copies of referrals)

1 April 2009 – 31 March 2010

Locality	Number of Referrals
Airdrie	16
Bellshill	7
Clydesdale	12
Coatbridge	6
East Kilbride	3
Hamilton	21
Motherwell	8
North Locality	5
Wishaw	5
Total	83

1 April 2009 – 31 March 2010

Site	Number of Referrals
Hairmyres	0
Monklands	6
Wishaw General	2
Total	8

Referrals from NHS 24:	77
-------------------------------	-----------

Initial Case Conferences Held:

Locality	1 April 09 - 31 March 10	Health Professionals attendance	Reports sent to CP Team
Airdrie	19	18	8
Bellshill	21	20	13
Cambuslang/Rutherglen	13	13	13
Clydesdale	21	16	10
Coatbridge	14	12	9
East Kilbride	29	23	13
Hamilton	25	23	21
Motherwell	17	16	9
North Locality	21	19	10
Wishaw	23	17	15
Total	203	177	121

Review Case Conferences Held:

Locality	1 April 09 - 31 March 10	Health Professionals attendance	Reports sent to CP Team
Airdrie	16	16	7
Bellshill	39	37	13
Cambuslang/Rutherglen	38	33	27
Clydesdale	35	32	21
Coatbridge	11	9	4
East Kilbride	72	67	50
Hamilton	47	45	37
Motherwell	17	17	10
North Locality	7	7	5
Wishaw	35	33	20
Total	317	296	194

Case Discussions Held:

Locality	1 April 09 - 31 March 10	Health Professionals attendance	Reports sent to CP Team
Airdrie	4	4	3
Bellshill	13	13	5
Cambuslang/Rutherglen	4	4	3
Clydesdale	4	4	2
Coatbridge	10	10	10
East Kilbride	5	4	4
Hamilton	3	3	2
Motherwell	35	34	29
North Locality	7	6	1
Wishaw	17	15	9
Total	102	97	68

Prebirth Case Discussions held:

Locality	1 April 2009 - 31 March 2010	Health Professionals Attendance
Airdrie	3	2
Bellshill	2	2
Cambuslang/Rutherglen		
Clydesdale	1	1
Coatbridge	4	4
East Kilbride	3	3
Hamilton	3	3
Motherwell	8	8
North Locality	3	3
Wishaw	9	9
Total	36	35

These figures may not reflect exact attendance as they are based on extrapolating information from minutes received from Social Work many of which have not yet been received.

Child Protection Training

Training	Apr-Jun 09	Jul-Sep 09	Oct-Dec 09	Jan-Mar 10	Total
Level 1 CP Awareness • Support Staff • Admin Staff	18		40	10	68
Induction	327	258	189	221	995
Level 2 Child Protection Awareness (Clinical Staff))	84	22	93	71	270
Level 3 (Inter-agency)					
Risk Assessment	3		9	24	36
Handling Childrens Behaviour	5			4	9
Emotional Abuse & Neglect	1		6	13	20
Professional Dangerousness	4		6		10
Raising awareness of Child Sexual Abuse				1	1
Total	442	280	343	344	1409

Additional Training

Training	Apr-Jun 09	Jul-Sep 09	Oct-Dec 09	Jan-Mar 10	Total
Documentation/Record Keeping	30			20	50
CP Messaging	15	37	23	5	80
Acute Mental Health					105
Local Child Protection sessions by Child Protection Advisors	9	15	55	12	91
Learning from Experience			27	18	45
Learning from Dundee case review (Acute sites)			59		59
Total	54	52	164	55	430

The total number of staff attending training in relation to Child Protection for the period 1st April 2009 to 31st March 2010 was **1839**

Central Point of Contact requests from other Agencies

Apr – Jun 2009	Jul – Sep 2009	Oct – Dec 2009	Jan – Mar 2010	Total
36	33	60	55	184

Telephone calls to Child Protection Team for advice

Apr – Jun 2009	Jul – Sep 2009	Oct – Dec 2009	Jan – Mar 2010	Total
169	170	120	109	568

Telephone calls to Child Protection Medical Helpline

77 calls

Case Supervision Sessions

Apr – Jun 2009	Jul – Sep 2009	Oct – Dec 2009	Jan – Mar 2010	Total
63	69	60	41	233

Case Support Sessions

Apr – Jun 2009	Jul – Sep 2009	Oct – Dec 2009	Jan – Mar 2010	Total
22	28	16	47	113

Child Protection Website (FirstPort)

Below is a snapshot of the visits to the Child Protection Website within FirstPort. The total number of "hits" represent a ten month period in the last financial year. Child Protection Policies, Guidelines and Documentation are available to view and download if required.

Child Protection Training including Multi-agency Training is also available to view. If training cannot be accommodated on the date requested staff may ask for their name to be placed on a waiting list for future courses

We expect the usage of the site to increase as users become increasingly comfortable using the website.

Webpage	No of visits
Child Protection Homepage	4866

Child Protection Documentation

Webpage	No of visits
Case Conference Outcome	168
Case conference template	300
Child protection documentation - stationery items	164
Child protection documentation awareness proforma	63
Child protection guidance for health professionals working in hospitals (pathway)	20
Follow up of health professional referral form to social work	97
Guidance for completion of case conference	64
Guidance for use of health professional referral form to social work	84
Sharing information about children at risk	103
Child protection - doctors responsibilities bma	19
Child protection - responsibilities of doctors in child protection cases	27
gmc_0-18yrs guidance	15
Child Protection Policies & Guidelines	
1. Intro section	41
2. West of Scotland interagency guidance	57
3. Health guidelines for the west of Scotland contents	46
4. Health guidelines for the west of Scotland	53
5. Health guidelines useful telephone numbers	43

Child Protection Additional Policies & Guidelines

Webpage	No of visits
0. Additional policies front cover and contents	47
1. Information sharing policy	53
2a. Policy for reporting mechanisms	52
2b. Procedure for reporting mechanisms child protection	47
3. Monitoring contact of children on the child protection register	56
4. Guidance for unseen child	56
5. Attendance at case conference case discussions	61
6. Retention of child health records - family records for missing families	37
7. Guidelines for legal proceedings in relation to child protection issues	43
8. Process for addressing practice issues	43
Inter-agency Guidance	
Referral form - Notification of child affected by parental substance misuse	21
When parents - carers of children are arrested	34
Working with hostile and unco-operative families	70
Consent to share information	27
Flyer	18
Good practice guidance	27
Lanarkshire information sharing protocol	39
The Lanarkshire Partners Guide to Information Sharing Leaflet	24
Positive examples of child Protection Messaging - flyer	17
Z-Card - A Guide to Sharing Information for Young People	20

Working with Children and families Affected by Substance Misuse

Webpage	No of visits
'Information to' form	106
Working with children and families affected by substance misuse protocol	101

APPENDIX 1

**CHILD PROTECTION MEDICAL AUDIT
NHS LANARKSHIRE**

2009

BY

**DR. K.RAY
ASSOCIATE SPECIALIST**

DATA PROVIDED BY

**DR.K RAY, DR L HUNTER, DR L AGRAWAL,
DR M MULLA & DR M MERCY**

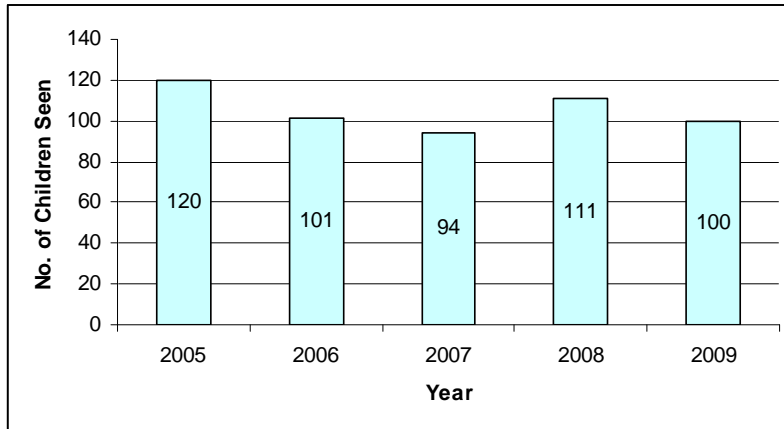
AUDIT 1

TOTAL NUMBER OF CHILDREN SEEN

RAY	HUNTER	AGRAWAL	MERCY	MULLA	TOTAL	2008	2007	2006	2005
27 (39)	30 (32)	35 (30)	4	4	100	111	94	101	120

FIGURE IN BRACKET FOR YEAR 2008

DR RAY OFF SICK JAN-FEB, DR MULLA JOINED LATE IN THE ROTA



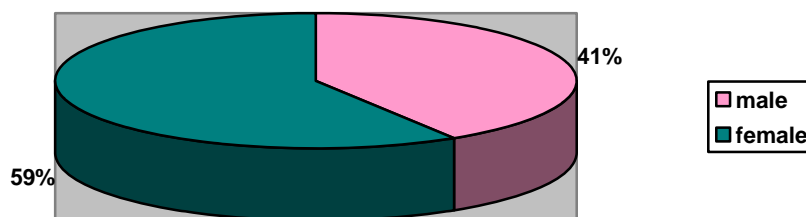
CONCLUSION: TOTAL NUMBER OF CASES SEEN HAVE BEEN NEARLY AROUND 100 EACH YEAR

AUDIT 2

SEX OF CHILDREN

Ray		Hunter			Agrawal		Mercy		Mulla		Total	
M	F	M	F	NK	M	F	M	F	M	F	M	F
12	15	13	16	1	13	22	2	2	1	3	41	58+1NK

CONCLUSION: APPROXIMATE SEX INCIDENCE RATIO IS FEMALE SLIGHTLY MORE

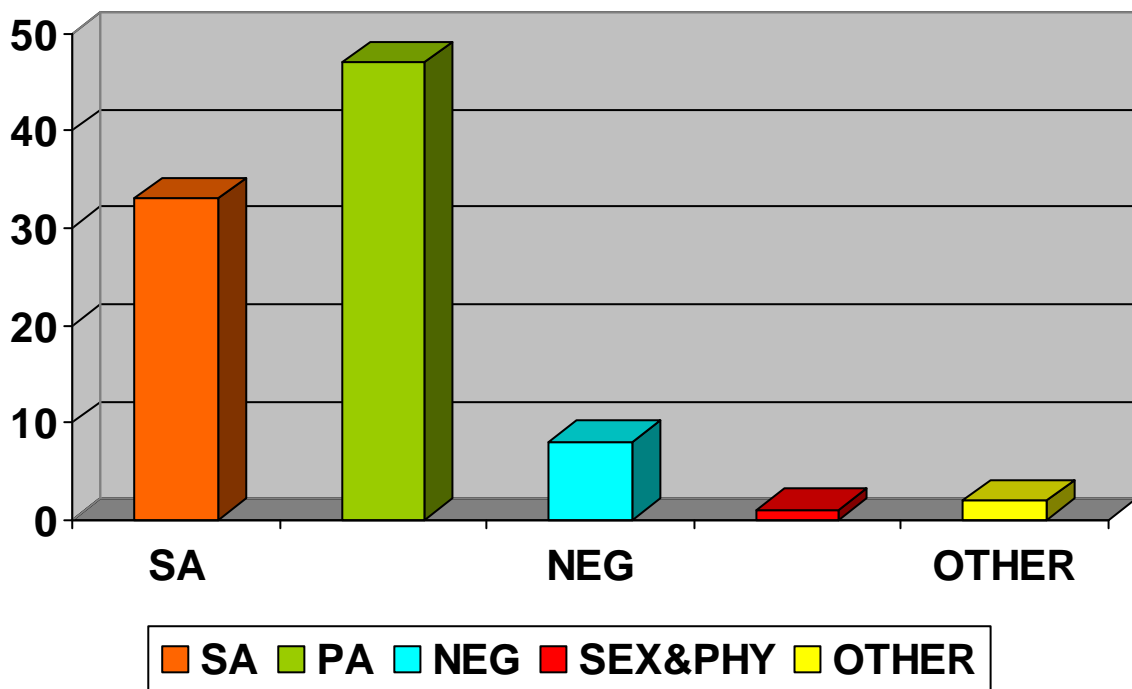


AUDIT 3

TYPE OF ABUSE

TYPE	RAY	HUNTER	AGRAWAL	MULLA	MERCY	TOTAL
Sexual Abuse	7	11	12	1	2	33
Physical Abuse	18	11	14	3	1	47
Neglect	1	2	5			8
Emotional		1				1
Other			1		1	2
Phy & Sexual		1				1
Phy & Neg	1	3	2			6
Phy & Emo		1				1
Phy & Oth			1			1

TYPE OF ABUSE CHART 2009



AUDIT 4

TYPE OF MEDICAL CM / FM

RAY		HUNTER			AGRAWAL		MULLA		MERCY		TOTAL		
CM	FM	CM	FM	NK	CM	FM	CM	FM	CM	FM	CM	FM	NK
7	20	12	17	1	9	26		4		4	28	71	1

CM: COMPREHENSIVE MEDICAL
FM : FORENSIC MEDICAL

AUDIT 5

TYPE OF JOINT MEDICAL

TYPE	RAY	HUNTER	AGRAWAL	MULLA	MERCY	TOTAL
SA	7	11	8	1	2	29
PA	13	2	15	3	1	34
PHY & SA		1				1
PHY & NEG		2	1			3
PHY & EMO		1				1
OTHER			2		1	3

AUDIT 6

AGE OF CHILDREN SEEN FOR SA

AGE	RAY	HUNTER	AGRAWAL	MULLA	MERCY	TOTAL
16 YR	1					1
15		1				1
14	2	2	1		1	6
13	1	1		1	1	4
12			1			1
11		1				1
9			1			1
8			1			1
7			1			1
6	1		1			2
5	1	2				3
4			1			1
3	1	4	4			9
2			1			1
1		1				1

CONCLUSION: HIGHEST NUMBER AT AGE 3
SECOND HIGHEST AGE 14

AUDIT 7

AGE OF CHILDREN FOR PA

AGE	RAY	HUNTER	AGRAWAL	MULLA	MERCY	TOTAL
15		1		1		2
14	3		2			5
12	1					1
10			1			1
9	1	1				2
8	1	2	3	1		7
7	2	1		1		4
6			2		1	3
5	2	2	3			7
4	4		2			6
3	2	6				8
2	1	2	3			6
< 1	2		1			3

CONCLUSION: HIGHEST NUMBER OF PHYSICAL ABUSE SEEN IN 3 YEAR OLDS

AUDIT 8

SA / SEX OF CHILDREN

SEX	RAY	HUNTER	AGRAWAL	MULLA	MERCY	TOTAL
FEMALE	6	11	11	1	2	31
MALE	1	1	1	-	-	3

CONCLUSION: MORE SA CASES IN FEMALES

AUDIT 9

PA / SEX OF CHILDREN

SEX	RAY	HUNTER	AGRAWAL	MULLA	MERCY	TOTAL
FEMALE	9	5	8	2	-	24
MALE	10	10	1 NK	9	1	32

CONCLUSION: MORE PHYSICAL ABUSE CASES IN MALES

AUDIT 10

VIDEO COLPOSCOPY USED

USED		RAY	HUNTER	AGRAWAL	MULLA	MERCY	TOTAL
FOR SA	YES	6	6	7	1	2	22
	NO	1	6	4			11
	NK			1			1
FOR PA				1			1

AUDIT 11

FINDINGS FOR PA

FINDINGS	RAY	HUNTER	AGRAWAL	MULLA	MERCY	TOTAL
+ VE	6	6	12	2	1	27
-VE	1	4	3			8
SUPPORTIVE	2	3	1			6
INCONCLUSIVE	10	3	1	1		15

AUDIT 12

FINDINGS IN SA

FINDINGS	RAY	HUNTER	AGRAWAL	MULLA	MERCY	TOTAL
+VE	1	1	4	1		7
-VE	3	6	5		2	16
SUPP	1					1
INCON	2	5	3			10

AUDIT 13

REFERRED BY

REFERRED BY	RAY	HUNTER	AGRAWAL	MULLA	MERCY	TOTAL
POLICE	20	21	12	4	4	61
SW	7	6	4			17
GP		2	7			9
PAEDIATRIC WGH		1				1
POLICE & SW			10			10
SCHOOL NURSE			1			1
A & E			1			1

CONCLUSION: 61% CASES CAME FROM POLICE

AUDIT 14

TYPE OF INJURY IN PA

TYPE	RAY	HUNTER	AGRAWAL	MULLA	MERCY	TOTAL
BRUISING	12	7	11	2	1	33
ABRASION	1					1
BURN	1	2	1			4
SLAP	2	1				3
BITE			1			1
FRACTURE OTHER		1				1
IMPLEMENT	1					1
BALD HAIR PATCH	1					1
PINCH		1				1

CONCLUSION: COMMONEST - BRUISE
 SECOND COMMON - BURN

AUDIT 15

AREA

AREA	RAY	HUNTER	AGRAWAL	MULLA	MERCY	TOTAL
SL	9	14	11	1		35
NL	15	15	23	3	4	60
DUMFRIES		1	1			2
GLASGOW	2					2
RUTHERGLEN	1					1

SL : SOUTH LANARKSHIRE NL: NORTH LANARKSHIRE

**CONCLUSIONS: MORE CASES FROM NORTH THAN SOUTH THIS YEAR
WAS NEARLY EQUAL LAST YEAR**

AUDIT 16

SA CASES –AREA

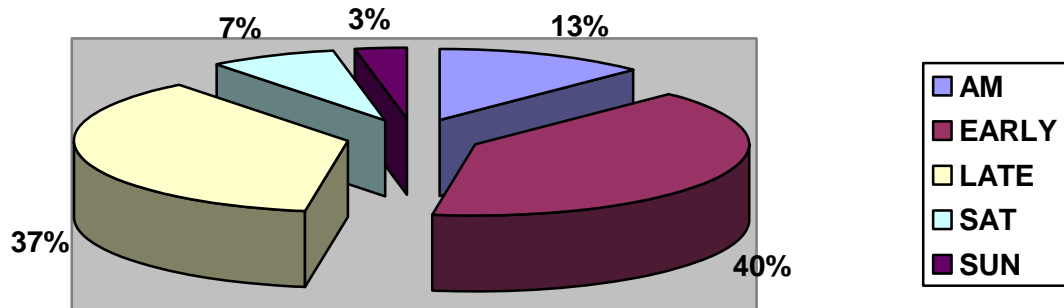
AREA	RAY	HUNTER	AGRAWAL	MULLA	MERCY	TOTAL
SL	1	4	4			9
NL	5	7	7	1	2	22
GLASGOW	1					1
DUMF		1	1			2

AUDIT 17

TIME OF MEDICAL EXAMINATION

	AM	PM		SAT	SUN	TOTAL
	(Before 12 noon)	EARLY (Between 12-3PM)	LATE (Between 3-7 PM)			
RAY	2	13	8	3	1	27
HUNTER	1	9	16	1NK	3	29 +1
AGRAWAL	8	14	10	1	2	35
MULLA	1	2	1			4
MERCY				3	1	4
TOTAL						

EACH MEDICAL TAKES FROM APPROXIMATELY 3-6 HRS



TIME OF MEDICALS 2009

AM: BEFORE 12 NOON
 EARLY: BETWEEN 12-3 PM
 LATE: BETWEEN 3-7 PM

AUDIT 18

CONSENT

		RAY	HUNTER	AGRAWAL	MULLA	MERCY	TOTAL
WRITTEN	PARENTS	16	11	22	2	4	55
	CHILD	9	2				11
	BOTH	1					1
VERBAL		1	12	6			19
NO			2	6	2		10
NOT KNOWN			3	1			4